



**SITUATION REPORT
CHILDREN IN DISASTERS
CALIFORNIA WILDFIRES
10/12/2017**

Quick Take: Situation Update

- 22 wildfires are burning
- More than 190,000 acres have been burned
- 3,500 structures damaged or destroyed
- 20,000 residents under evacuation orders
- 24 individuals have died
- Wind gusts of up to 45 miles per hour are driving the spread of fires
- At least 9 counties in California have active fires
- The largest fire is located in Napa County and is called Tubbs Fire. Overnight the fire grew from 6,000 acres to 34,270 acres.

Sources: [CAL OES](#) [USA Today](#) [ABC News](#) [CAL Fire](#)

The Federal Emergency Management Agency (FEMA) announced October 10 that federal disaster assistance has been made available to the state of California to supplement state, tribal, and local recovery efforts in the areas affected by wildfires from October 8, 2017 and continuing.

Emergency Proclamations have been issued by Governor Brown for the following counties:

- Solano (October 10)
- Napa (October 9)
- Sonoma (October 9)
- Yuba (October 9)
- Butte (October 9)
- Lake (October 9)
- Mendocino (October 9)
- Nevada (October 9)
- Orange (October 9)

Over 20,000 residents have evacuated and over 40 shelters/evacuation centers are currently active. For a complete list visit [CAL OES](#)

October Wildfires 2017





SITUATION REPORT
CHILDREN IN DISASTERS
CALIFORNIA WILDFIRES
10/12/2017

Legend

Solano County Centers



Napa County Centers



Solano FCC



Napa County FCC



2017_Fire_Points - Fire Status



Active Fire



Inactive Fire



New Active



Recently Contained



Resource Benefit

Ics - Points



Ics



full-closure



full-closure-hsr



Ics-hsr



default

Fire_Perimeters

Fire_Perimeters_2017_B



Active Fire



Inactive Fire

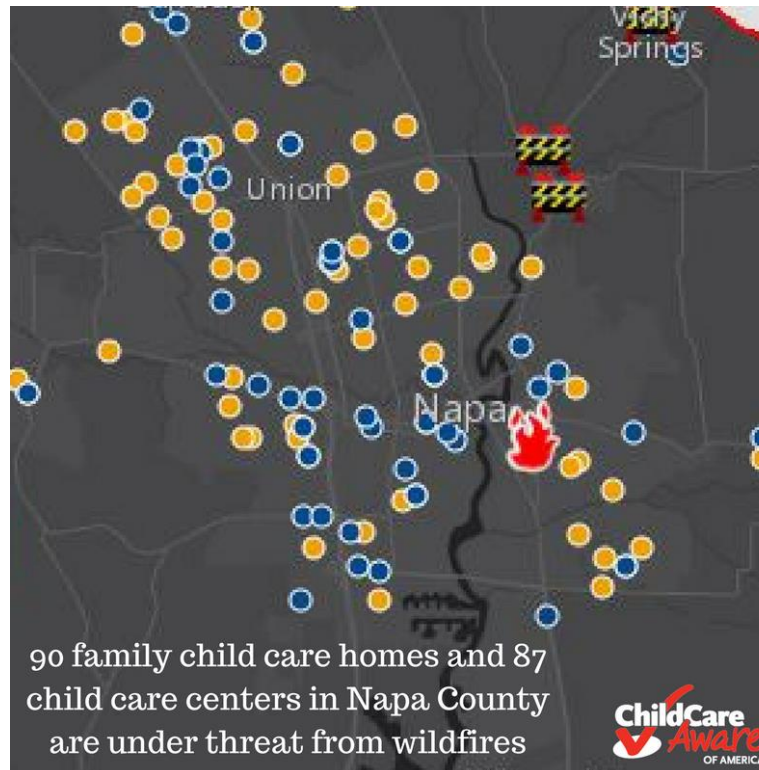


New Active



Recently Contained

Resource Benefit



LINK TO INTERACTIVE CHILD CARE AWARE OF AMERICA MAP: <https://arcg.is/4DjWD>



Children and Child Care Information

- Napa County:
 - 178 child care providers
 - 90 FCC Homes
 - 87 Centers
- Salono County: 641 child care providers
 - 513 FCC Homes
 - 128 Centers

*Data Sources: Child Care Aware of America National Data System for Child Care.

Butte County	2012	2014
Total number of residents	221,118	224,518
Number of children 0-12	32,644	31,733
Number of children 0-5	14,665	14,276
Families with all parents in the labor force	13,558	12,288
Single mothers in the labor force	3,733	3,274
Children 0-12 with parents in the labor force	19,455	18,694

Lake County	2012	2014
Total number of residents	64,394	65,465
Number of children 0-12	9,288	9389
Number of children 0-5	4,272	4,266
Families with all parents in the labor force	4,376	4,192
Single mothers in the labor force	1,219	1,247
Children 0-12 with parents in the labor force	6,450	7,512

Mendocino County	2012	2014
Total number of residents	88,566	88,795
Number of children 0-12	13,696	13,488
Number of children 0-5	6,291	6,095



**SITUATION REPORT
CHILDREN IN DISASTERS
CALIFORNIA WILDFIRES
10/12/2017**

Families with all parents in the labor force	6,303	6,023
Single mothers in the labor force	1,857	1,775
Children 0-12 with parents in the labor force	8,728	9,410

Napa County	2012	2014
Total number of residents	138,577	141,172
Number of children 0-12	21,779	20,762
Number of children 0-5	9,562	9,121
Families with all parents in the labor force	11,262	10,673
Single mothers in the labor force	2,275	2,143
Children 0-12 with parents in the labor force	16,425	13,965

Nevada County	2012	2014
Total number of residents	98,202	98,453
Number of children 0-12	12,195	11,101
Number of children 0-5	5,109	4,827
Families with all parents in the labor force	7,005	6,370
Single mothers in the labor force	1,577	1,420
Children 0-12 with parents in the labor force	8,207	5,640

Orange County	2012	2014
Total number of residents	3,071,933	Not available
Number of children 0-12	509,995	496,938
Number of children 0-5	230,883	224,251
Families with all parents in the labor force	217,727	221,007
Single mothers in the labor force	51,776	48,344
Children 0-12 with parents in the labor force	320,501	312,717

Solano County	2012	2014
----------------------	-------------	-------------



**SITUATION REPORT
CHILDREN IN DISASTERS
CALIFORNIA WILDFIRES
10/12/2017**

Total number of residents	415,913	428,705
Number of children 0-12	69,128	69,208
Number of children 0-5	31,355	31,098
Families with all parents in the labor force	30,882	33,431
Single mothers in the labor force	10,000	9,654
Children 0-12 with parents in the labor force	44,760	47,620

Sonoma County	2012	2014
Total number of residents	489,283	497,260
Number of children 0-12	74,473	72,419
Number of children 0-5	33,290	32,136
Families with all parents in the labor force	37,259	36,801
Single mothers in the labor force	9,546	8,988
Children 0-12 with parents in the labor force	51,890	52,849

Yuba County	2012	2014
Total number of residents	73,021	74,258
Number of children 0-12	15,177	16,004
Number of children 0-5	7,211	7,379
Families with all parents in the labor force	5,164	6,037
Single mothers in the labor force	1,697	1,547
Children 0-12 with parents in the labor force	8,970	8,901

The 2015 California Child Care Portfolio, the 10th edition of a biennial report, presents a unique portrait of child care supply, demand, and cost statewide and county by county, as well as data regarding employment, poverty, and family budgets. The child care data in this report was gathered with the assistance of local child care resource and referral programs (R&Rs). R&Rs work daily to help parents find child care that best suits their family and economic needs. They also work to build and support the delivery of high quality child care services in diverse settings throughout the state.

All county sheets can be found here:

https://d3n8a8pro7vhmx.cloudfront.net/rrnetwork/pages/204/attachments/original/1499103375/All_Co unties_Final.pdf?1499103375



**SITUATION REPORT
CHILDREN IN DISASTERS
CALIFORNIA WILDFIRES
10/12/2017**

Fire Information

Napa & Solano Counties - Atlas Fire
South of Lake Berryessa and northeast of Napa
43,762 acres, 3% contained
Significant structures destroyed

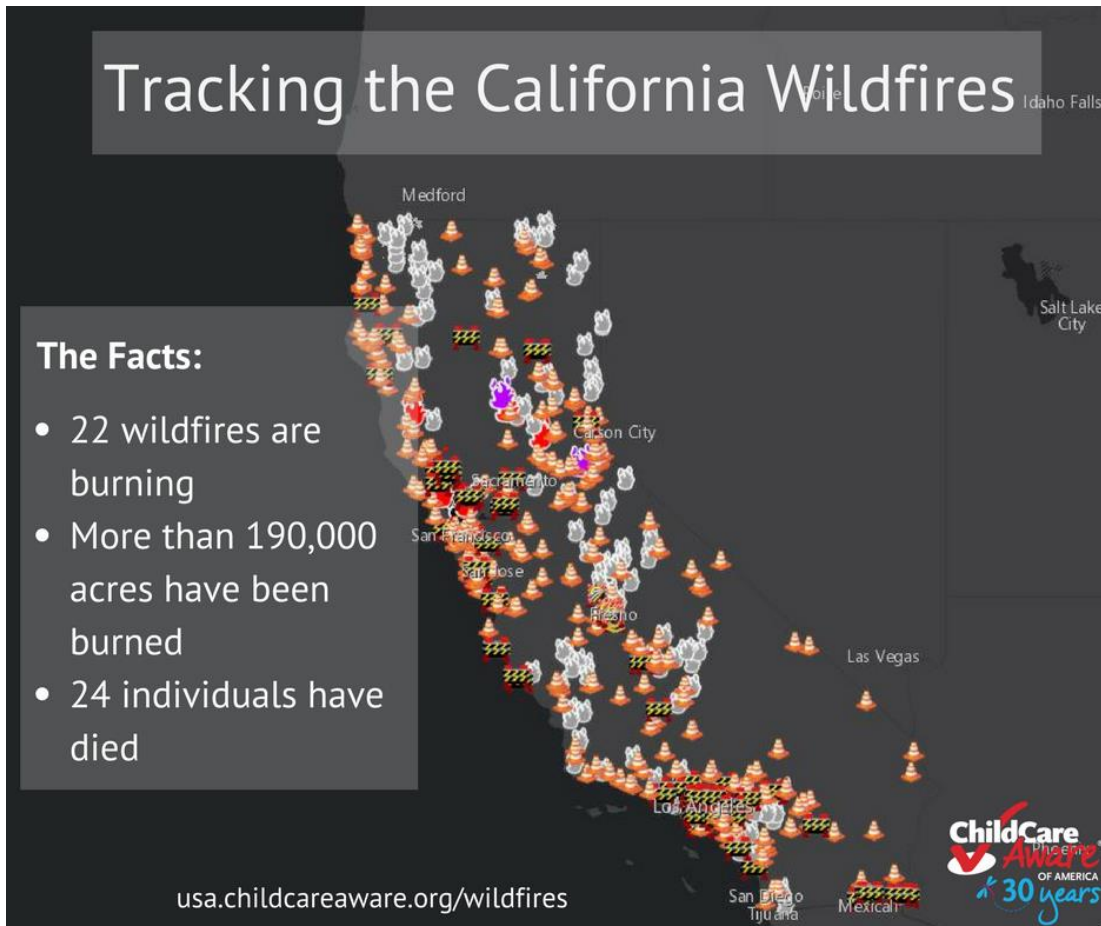
Napa County
Location: off Patrick Rd, west of Napa
Acres Burned 10,817 acres - 2% containment

Tubbs Fire, Sonoma and Napa Counties
Between Calistoga and Santa Rosa
34,270 acres, 10% contained
Significant number of structures destroyed

Lobo Fire, Nevada County
Rough and Ready area
829 acres, 52% contained
Multiple structures destroyed

Yuba County
Location: Cascade Way and Marysville Rd, north of Collins Lake
Acres Burned 10,171 acres - 45% contained

Information on additional fires and the latest updates from [CAL Fire](#)





Disasters often wreak havoc on child care providers. This has been especially prevalent this hurricane season with child care providers serving hundreds of thousands of children impacted by Hurricanes Harvey, Irma, and Maria. The devastating wildfires currently ravaging California have also resulting in evacuations and structural damage across numerous counties. Following disasters like these, child care providers may be forced to close, rebuild, or in some cases never reopen, and this impact has implications that can be felt across all sectors of the community—businesses, schools, emergency management, parents, and families.

Child care providers need immediate assistance post-disaster, and this assistance is not always available to them. To support child care providers in their hour of need, Child Care Aware of America has established the [Child Care Disaster Relief Fund](#)—a fund specifically designed to assist child care providers recovering from disasters.

[Donate Now](#)





Child Care Aware of America, Emergency Preparedness Page
[Http://childcareprepare.org](http://childcareprepare.org)

California Wildlife Page
<http://usa.childcareaware.org/wildfires>

Email us:
preparedness@usa.childcareaware.org